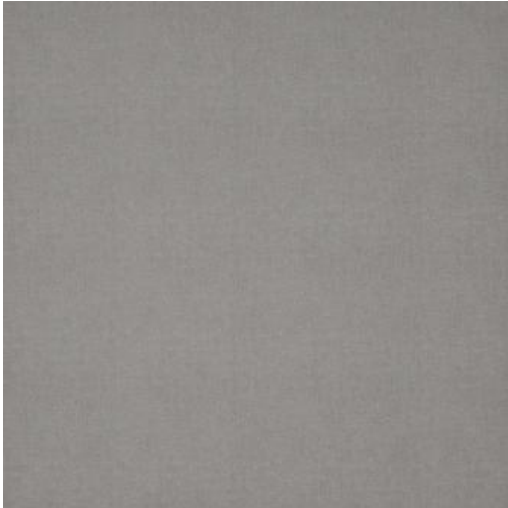


# BAXTER-ESS # 901 CLARITY



## PRODUCT INFORMATION

EXCLUSIVE PATTERN AVAILABLE IN 13 COLORS

PATTERN NAME **BAXTER-ESS**

COLOR **# 901 CLARITY**

PATTERN COMMENT AVAILABLE IN 14 COLOURS \*\*2 YD  
MINIMUMS-1/2 YARD INCREMENTS ONLY-  
NO CFA'S

COLOR  
COMMENT

USAGE Upholstery

WIDTH 56"

REPEAT

CONTENT 100% POLYESTER

CLEANING WASH BELOW 30-IRON MEDIUM - DRY  
CLEAN

FINISH

TESTS 100,000 DOUBLE RUBS NFPA 260 CLASS  
1(UFAC) - CAL 117-2013  
NFPA 260 CLASS 1(UFAC) - CAL 117-2013

COUNTRY CHINA

WAREHOUSE North CarolinaNorth Carolina