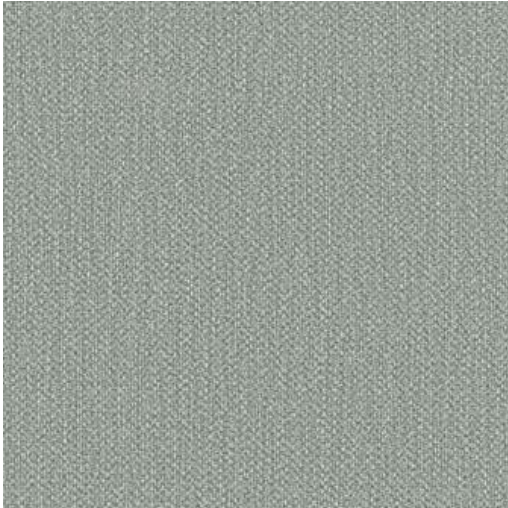


# RAVELLO-NJ # 154 COASTLINE



## PRODUCT INFORMATION

EXCLUSIVE PATTERN AVAILABLE IN 12 COLORS

**PATTERN NAME** RAVELLO-NJ

**COLOR** # 154 COASTLINE

**PATTERN COMMENT** \*\*3 YD MINIMUMS - 1 YARD INCREMENTS ONLY  
- NO CFA'S\*\*

**COLOR COMMENT**

**USAGE** Upholstery

**WIDTH** 54"

### REPEAT

**CONTENT** FACE: 100% PVC  
BACKING: 100% POLYESTER

**CLEANING** WIPE WITH DAMP CLOTH & MILD SOAP; WIPE DRY. FOR MORE CLEANING INSTRUCTIONS GO TO MAXWELLFABRICS.COM/RESOURCES

### FINISH

**TESTS** 300,000 DOUBLE RUBS NFPA 260 CLASS I (UFAC), CAL 117-2013, IMO A652 (16) 8.2

**COUNTRY** KOREA