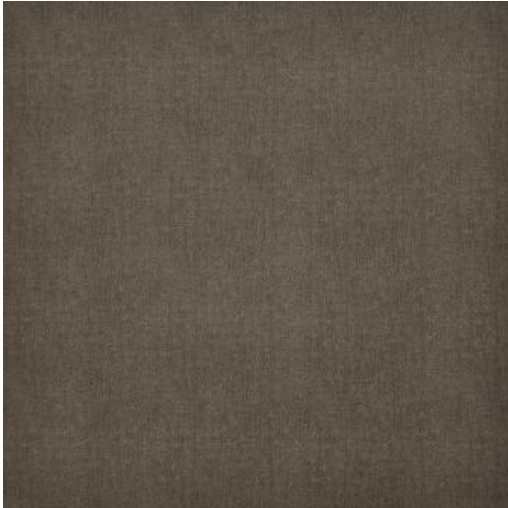


BAXTER-ESS # 100 EARTH



PRODUCT INFORMATION

EXCLUSIVE PATTERN AVAILABLE IN 13 COLORS

PATTERN NAME **BAXTER-ESS**

COLOR **# 100 EARTH**

PATTERN COMMENT AVAILABLE IN 14 COLOURS **2 YD
MINIMUMS-1/2 YARD INCREMENTS ONLY-
NO CFA'S

COLOR
COMMENT

USAGE Upholstery

WIDTH 56"

REPEAT

CONTENT 100% POLYESTER

CLEANING WASH BELOW 30-IRON MEDIUM - DRY
CLEAN

FINISH

TESTS 100,000 DOUBLE RUBS NFPA 260 CLASS
1(UFAC) - CAL 117-2013
NFPA 260 CLASS 1(UFAC) - CAL 117-2013

COUNTRY CHINA

WAREHOUSE North CarolinaNorth Carolina