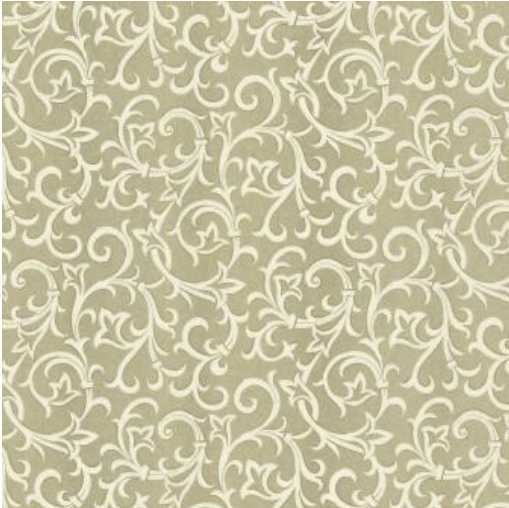


# BRODSWORTH (WP)

## # 03



### PRODUCT INFORMATION

---

**EXCLUSIVE PATTERN AVAILABLE IN 5 COLORS**

---

**PATTERN NAME**      **BRODSWORTH (WP)**

**COLOR**                      **# 03**

**PATTERN COMMENT**      EXCLUSIVE PATTERN AVAILABLE IN 5 COLOURS

**COLOR COMMENT**      # 03

**WIDTH**                      20.5"X11YD

**REPEAT**                    V-10.5

**CONTENT**                  STRAIGHT PASTE THE WALL

**CLEANING**                WASHABLE STRIPPABLE

**FINISH**

**NOTES**                      STRIPPABLE

**TESTS**                      CLASS A-ASTM E84-16

**COUNTRY**                 UNITED KINGDOM

**WAREHOUSE**             North CarolinaNorth Carolina

---