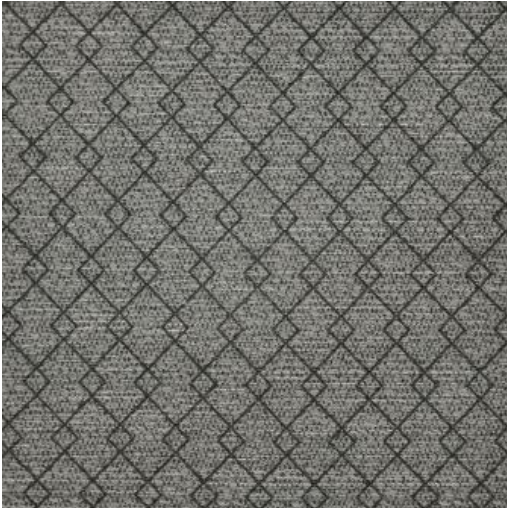


## LINKED IN # 620 CHARCOAL



### PRODUCT INFORMATION

---

**EXCLUSIVE PATTERN AVAILABLE IN 1 COLORS**

---

**PATTERN NAME** [LINKED IN](#)

---

**COLOR** [# 620 CHARCOAL](#)

---

**PATTERN COMMENT** EXCLUSIVE PATTERN AVAILABLE IN 3 COLOURS

---

**COLOR COMMENT**

---

**USAGE** Clearance Items Only, Upholstery

---

**WIDTH** 54"

---

**REPEAT** V-3.6"H-7"

---

**CONTENT** 39% POLYESTER/31% RAYON 19% OLEFIN/11% UPCYCLED COTTON

---

**CLEANING** WASH 30 NANOTEX ASURE FINISH

---

**FINISH**

---

**NOTES** NANOTEX ASURE FINISH

---

**TESTS** 30,000 DOUBLE RUBS NFPA 260 CLASS 1(UFAC) - CAL 117-2013  
NFPA 260 CLASS 1(UFAC) - CAL 117-2013

---

**COUNTRY** USA

---

**WAREHOUSE** North CarolinaNorth Carolina

---