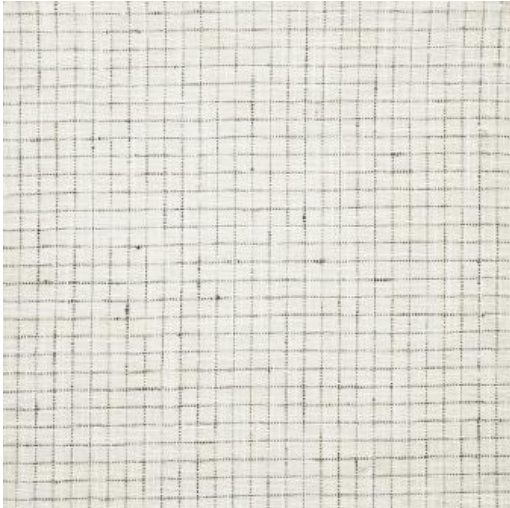


RIGHT ANGLES # 680 MINK



PRODUCT INFORMATION

EXCLUSIVE PATTERN AVAILABLE IN 3 COLORS

PATTERN NAME **RIGHT ANGLES**

COLOR **# 680 MINK**

PATTERN COMMENT AVAILABLE IN 3 COLOURS

COLOR COMMENT

USAGE Drapery, Multi-Purpose, Light Upholstery

WIDTH 54"

REPEAT V&H-0.6"

CONTENT 100% POLYESTER

CLEANING DRY CLEAN STAIN REPELLENT

FINISH

NOTES STAIN REPELLENT

TESTS 20,000 DOUBLE RUBS NFPA 260 CLASS
1(UFAC) - CAL 117-2013
NFPA 260 CLASS 1(UFAC) - CAL 117-
2013

COUNTRY INDIA

WAREHOUSE North CarolinaNorth Carolina