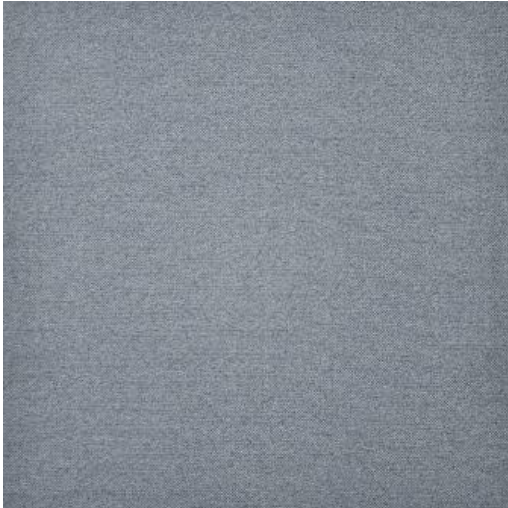


DOROTHY # 916 TIDE



PRODUCT INFORMATION

EXCLUSIVE PATTERN AVAILABLE IN 2 COLORS

PATTERN NAME **DOROTHY**

COLOR **# 916 TIDE**

PATTERN COMMENT AVAILABLE IN 3 COLOURS

COLOR COMMENT

USAGE Upholstery

WIDTH 57"

REPEAT

CONTENT 100% POLYESTER

CLEANING WASH BELOW 30 PERMANENT PRESS
CRYPTON HOME FINISH

FINISH

NOTES CRYPTON HOME FINISH

TESTS 50,000 DOUBLE RUBS NFPA 260 CLASS
1(UFAC) - CAL 117-2013
NFPA 260 CLASS 1(UFAC) - CAL 117-
2013

COUNTRY CHINA

WAREHOUSE North CarolinaNorth Carolina