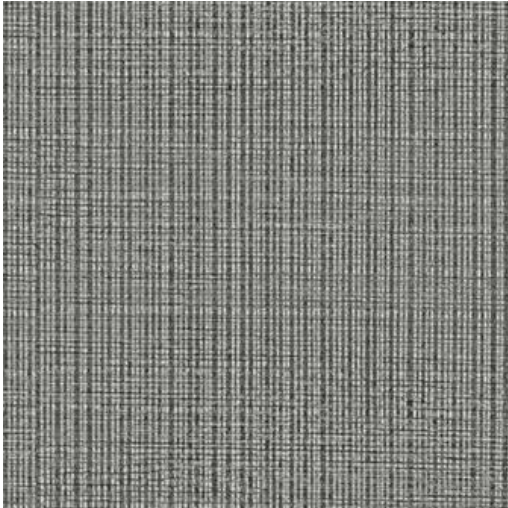


# BOURNEMOUTH-NJ # 627 GRATE



## PRODUCT INFORMATION

EXCLUSIVE PATTERN AVAILABLE IN 8 COLORS

**PATTERN NAME** BOURNEMOUTH-NJ

**COLOR** # 627 GRATE

**PATTERN COMMENT** \*\*3 YD MINIMUMS - 1 YARD INCREMENTS ONLY  
- NO CFA'S\*\*

**COLOR COMMENT**

**USAGE** Upholstery

**WIDTH** 53"

### REPEAT

**CONTENT** FACE: 100% SILICONE BASE: 100%  
POLYURETHANE (POLYCARBONATE)  
BACKING: 100% POLYESTER

**CLEANING** WIPE WITH DAMP CLOTH & MILD SOAP; WIPE  
DRY. FOR MORE CLEANING INSTRUCTIONS  
GO TO MAXWELLFABRICS.COM/RESOURCES

**FINISH** GRAFFITI FREE

**TESTS** 200,000 DOUBLE RUBS NFPA 260 CLASS I  
(UFAC), CAL 117-2013, IMO A652 (16) 8.36

**COUNTRY** KOREA