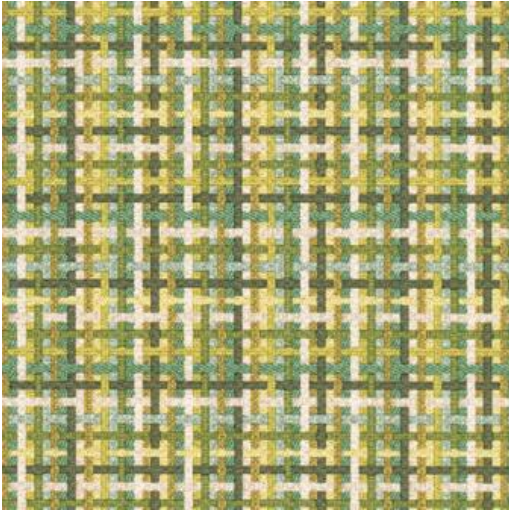


# VESTIAIRE-NJ # 380 MEADOW



## PRODUCT INFORMATION

EXCLUSIVE PATTERN AVAILABLE IN 6 COLORS

**PATTERN NAME** VESTIAIRE-NJ

**COLOR** # 380 MEADOW

**PATTERN COMMENT** \*\*3 YD MINIMUMS - 1 YARD INCREMENTS ONLY  
- NO CFA'S\*\*

**COLOR COMMENT**

**USAGE** Upholstery

**WIDTH** 53"

**REPEAT** V-4" H-2"

**CONTENT** FACE: 100% SILICONE BASE: 100%  
POLYURETHANE (POLYCARBONATE)  
BACKING: 100% POLYESTER

**CLEANING** REGULAR MAINTENANCE: WIPE WITH DAMP  
CLOTH & MILD SOAP; WIPE DRY. FOR MORE  
CLEANING INSTRUCTIONS GO TO  
MAXWELLFABRICS.COM/RESOURCES

**FINISH** GRAFFITI FREE

**TESTS** 200,000 DOUBLE RUBS NFPA 260 CLASS I  
(UFAC), CAL 117-2013, IMO A652 (16) 8.18

**COUNTRY** KOREA