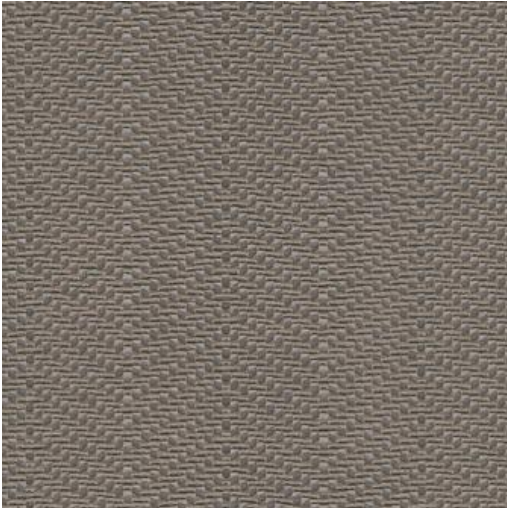


# TRUSS-NJ

## # 990 TIN



### PRODUCT INFORMATION

EXCLUSIVE PATTERN AVAILABLE IN 9 COLORS

**PATTERN NAME** TRUSS-NJ

**COLOR** # 990 TIN

**PATTERN COMMENT** \*\*3 YD MINIMUMS - 1 YARD INCREMENTS ONLY  
- NO CFA'S\*\*

**COLOR COMMENT**

**USAGE** Upholstery

**WIDTH** 54"

#### REPEAT

**CONTENT** FACE: 100% PVC  
BACKING: 100% POLYESTER

**CLEANING** REGULAR MAINTENANCE: WIPE WITH DAMP CLOTH & MILD SOAP; WIPE DRY. FOR MORE CLEANING INSTRUCTIONS GO TO [MAXWELLFABRICS.COM/RESOURCES](http://MAXWELLFABRICS.COM/RESOURCES)

#### FINISH

**TESTS** 100,000 DOUBLE RUBS NFPA 260 CLASS I (UFAC), CAL 117-2013, IMO A652 (16) 8.56

**COUNTRY** KOREA