



*Maxwell*

**CONTRACT LOOKBOOK**

SPRING 2024

HOSPITALITY

HEALTHCARE

CONTRACT

[maxwellfabrics.com](http://maxwellfabrics.com) | [contract@maxwellfabrics.com](mailto:contract@maxwellfabrics.com) | 800-663-1159 EXT 6





## PERFORMANCE CUT VELVETS

This season, we combine the luxury and natural durability of fine Belgian velvet with ALTA cleanable technology. The result is Performance Cut Velvets, a decorative group of patterns that is perfect for boutique hospitality settings with abrasion ratings of 50,000 double rubs and over. Our design story and palette are inspired by the elegance of Northern Italian mountain towns, featuring trend colors of caper, rust, cobalt and radicchio alongside classic gold and modern black and white combinations.

[Click the book image or name to view it on our website](#)



## TELAFINA XVI

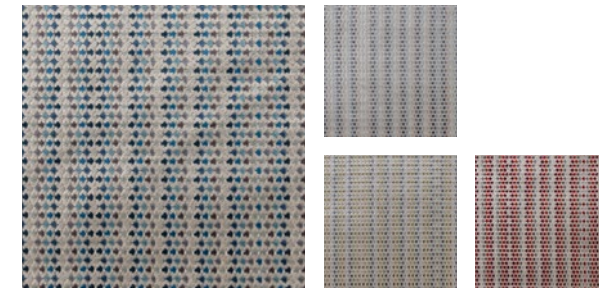
Our Telafina line is dedicated to building a seasonless capsule of must-have luxury constructions with a focus on natural fiber content. Telafina XVI continues that focus with the introduction of Belluno, a sumptuous mohair blend available in 26 rich colorways like blood orange, sequoia, basil and prussian blue with nuanced neutrals of camel, bronze and rootbeer. Mohair velvet is a naturally robust construction and exceeds 150,000 double rubs.

*Maxwell*

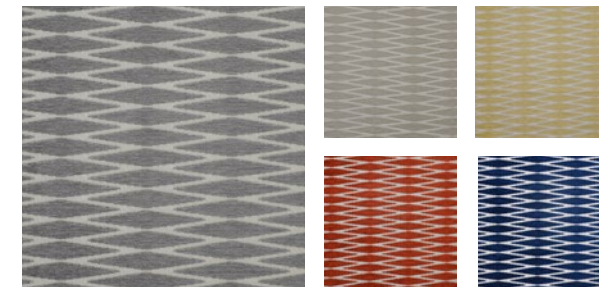


# GREYHOUND

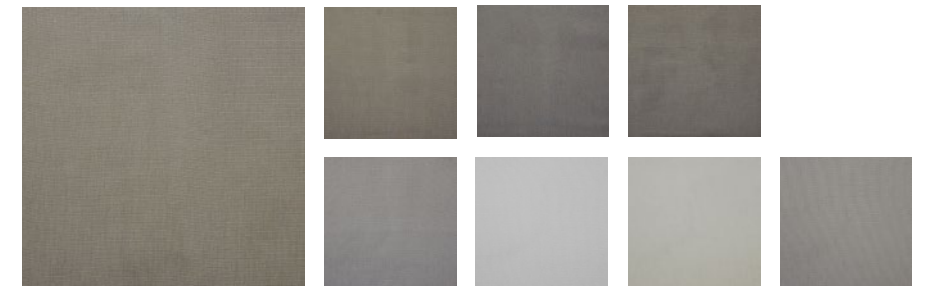
*Oyster & Weimaraner*



LECCO  
#610 Shoreline



BACKGAMMON  
#907 Shark



BOLAN  
#54 Owl



CRISTOBAL  
#908 Luna

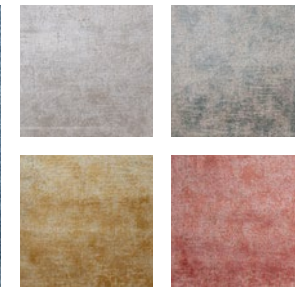


# HIGH TIDE

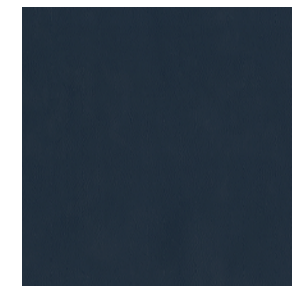
*Cobalt & Agate*



GAROLA  
#605 Shapphire



BROSSA  
#604 Neptune



JACKSON  
#601 Admiral

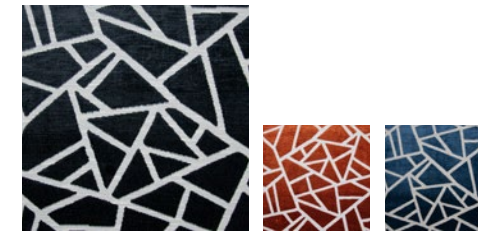


SUPERFINE  
#806 Mountain



# CAVIAR CANAPE

*Bittersweet & Caviar*



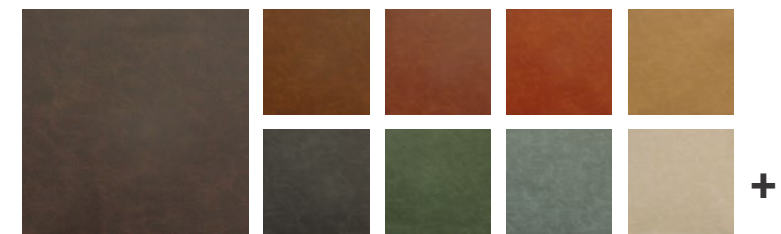
TRENTO  
#616 Charcoal



MIRREN  
#619 Raven



BELLUNO  
#121 Gray Owl



GRANGER  
#721 Bison

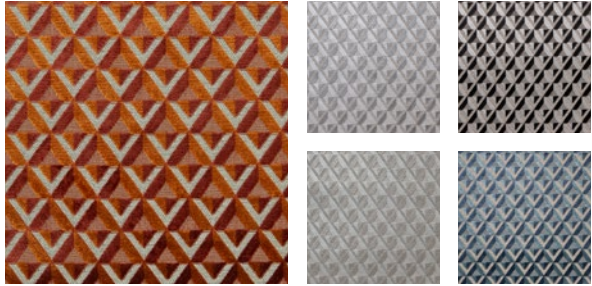


BOWTIE  
#672 Driftwood

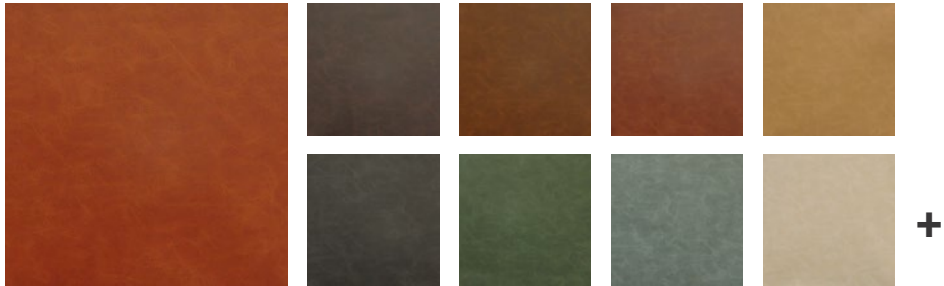


# BACCARAT ROUGE

*Persimmon & Satsuma*



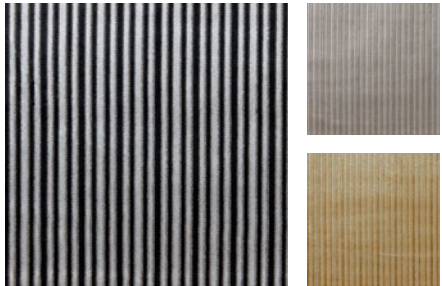
VINOVO  
#640 Cayene



GRANGER  
#711 Canyon



BELLUNO  
#109 Permission



LUGANO  
#617 Zebra



# RUBY SLIPPERS

*Rhubarb & Wine*



TRIESTE  
#644 RHUBARB



ICON  
#796 Syrah



BELLUNO  
#111 Sequoia

BELLUNO  
#110 Blood Orange



SILKY SMOOTH  
#44 Sand

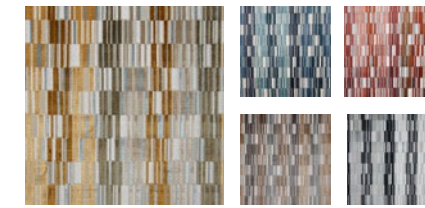
Click the pattern icon or name to view it on our website





# DIRTY MARTINI

*Caper & Filigree*



TIRANO  
#637 Caper



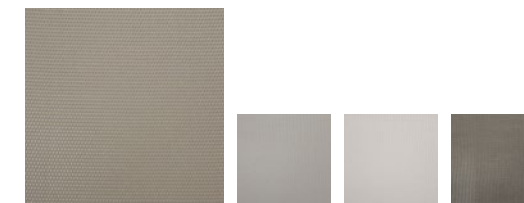
IMPASTO  
#803 Hay



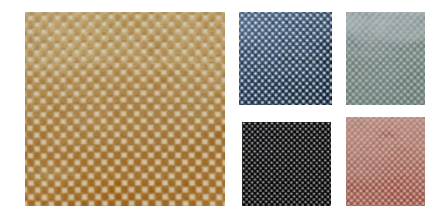
BELLUNO  
#107 Olive



TARO  
#215 Thyme

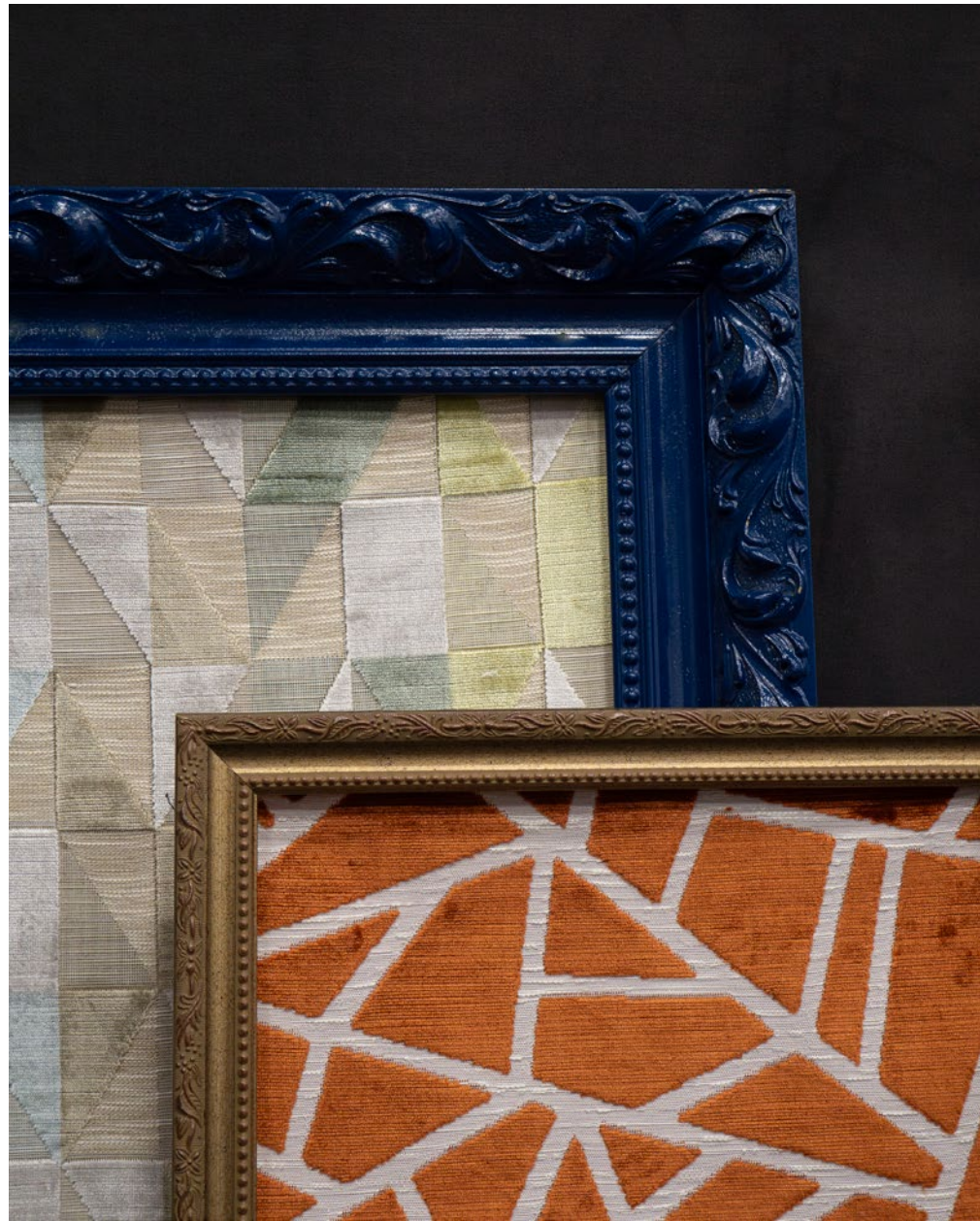


KIR ROYALE  
#402 Marble



BOLZANO  
#636 Midas







# LET US BE YOUR Design Assistant™

Our dedicated in-house design assistant team are unrivaled in the industry. Consider our design assistants your style concierge. If the look you envision for your project is not in our line, our design assistants will work to source or create the perfect textile through our trusted suppliers.



## TALK TO THE EXPERTS

Let us assist you by:

- Saving you time
- Offering technical knowledge and suggesting substitutes
- Providing solutions for budgets and lead times
- Stock checking and availability
- Priority sample shipping upon request

## CONTACT US

### EMAIL

[contract@maxwellfabrics.com](mailto:contract@maxwellfabrics.com)

[contractsourcing@maxwellfabrics.com](mailto:contractsourcing@maxwellfabrics.com)

### PHONE

800-663-1159 ext. 1

### WEBSITE

[maxwellfabrics.com/designassistant](https://maxwellfabrics.com/designassistant)

*Maxwell*