

The background of the image is a rich, textured display of various fabric samples. On the left, several rolls of fabric in shades of blue and white are visible. In the center and right, there are more fabric samples, some with intricate patterns and others with solid colors. A wooden table in the foreground holds several folded fabric pieces in muted tones like lavender, teal, and yellow. The scene is decorated with lush green plants, including a large monstera leaf in the top right and a smaller plant in a glass cloche in the bottom right. The lighting is warm and directional, creating soft shadows and highlighting the textures of the fabrics.

# Maxwell

CONTRACT LOOKBOOK

SPRING 2023

HOSPITALITY HEALTHCARE CONTRACT

[maxwellfabrics.com](http://maxwellfabrics.com) | 800-663-1159 EXT 6 | [contract@maxwellfabrics.com](mailto:contract@maxwellfabrics.com)

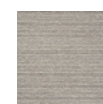
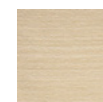
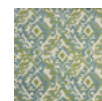


# BLACK SAND BEACH

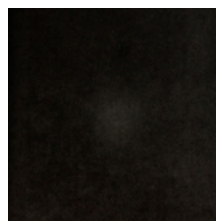
COLOR TRENDS  
cocoa & onyx



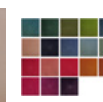
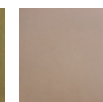
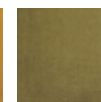
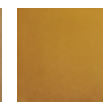
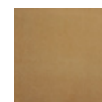
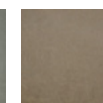
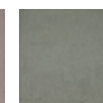
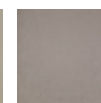
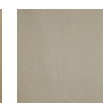
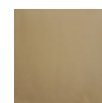
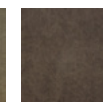
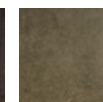
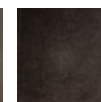
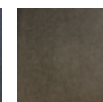
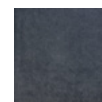
BANDERA  
#628 BROWNIE



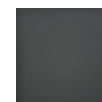
BENNINGTON  
#613 TRAIL



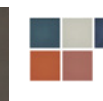
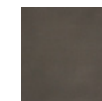
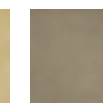
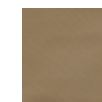
PALERMO  
#411 ONYX



VESPER  
#243 TAUPE



STANDISH  
#665 GESSO



CLICK THE FABRICS IN THE SCHEME OR THE ICONS TO THE RIGHT  
TO VIEW AVAILABLE COLORS ONLINE

CONTRACT@MAXWELLFABRICS.COM



# SAND SCULPTURES

COLOR TRENDS  
dune & vanilla



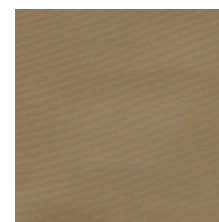
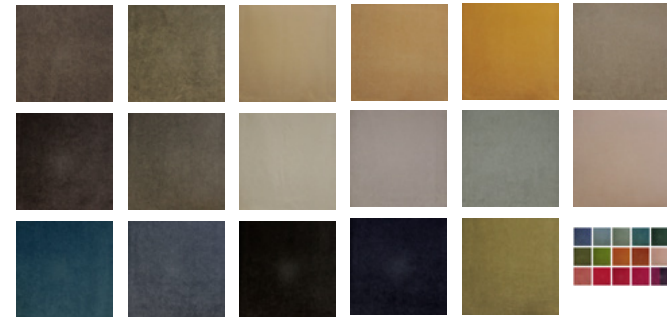
SOUTHPORT  
#615 MUSHROOM



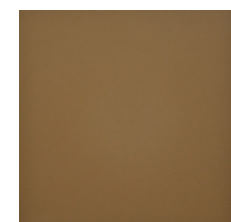
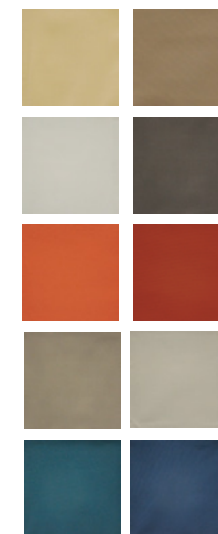
FLUME  
#611 TWINE



PALERMO  
#405 SAND



STANDISH  
#614 BISCUIT



VESPER  
#252 BRITISH TAN



CLICK THE FABRICS IN THE SCHEME OR THE ICONS TO THE RIGHT  
TO VIEW AVAILABLE COLORS ONLINE

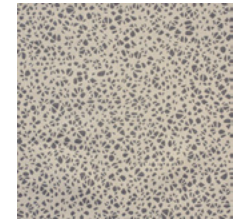
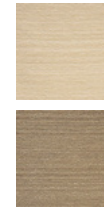
CONTRACT@MAXWELLFABRICS.COM

# SKIPPING STONES

COLOR TRENDS  
basalt & plaster



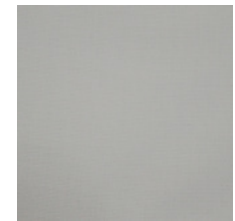
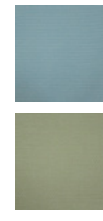
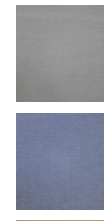
BENNINGTON  
#619 GRANITE



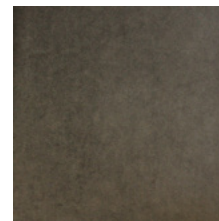
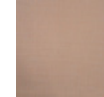
WILLISTON  
#634 CRAG



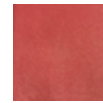
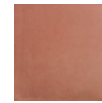
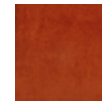
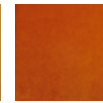
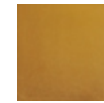
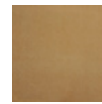
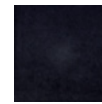
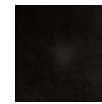
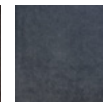
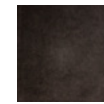
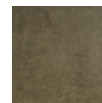
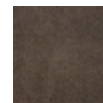
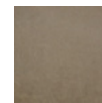
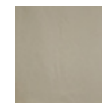
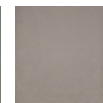
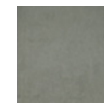
PUTNEY  
#617 SMOKE



MIRBEAU  
#652 PARCHMENT



PALERMO  
#409 CHARCOAL



CLICK THE FABRICS IN THE SCHEME OR THE ICONS TO THE RIGHT  
TO VIEW AVAILABLE COLORS ONLINE

CONTRACT@MAXWELLFABRICS.COM



# MESSAGE IN A BOTTLE

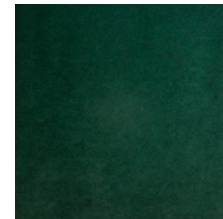
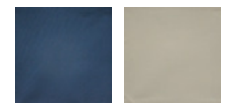
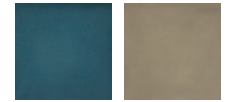
COLOR TRENDS  
spearmint & salt



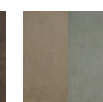
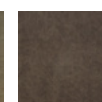
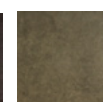
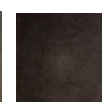
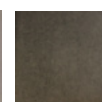
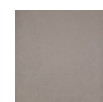
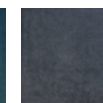
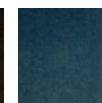
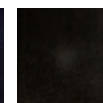
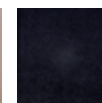
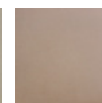
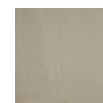
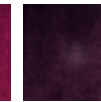
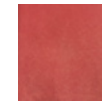
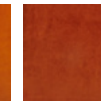
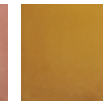
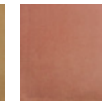
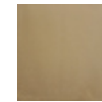
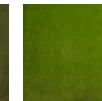
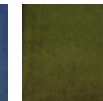
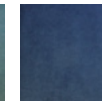
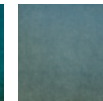
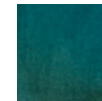
MARFA  
#644 NORI



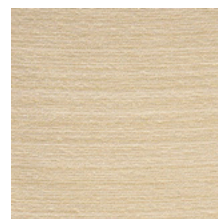
STANDISH  
#648 DAISY



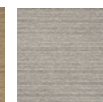
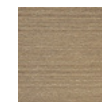
PALERMO  
#417 HUNTER



PALERMO  
#415 DUCKEGG



BENNINGTON  
#607 NATURAL

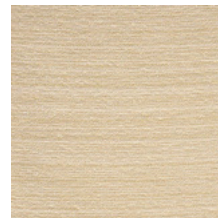


CLICK THE FABRICS IN THE SCHEME OR THE ICONS TO THE RIGHT  
TO VIEW AVAILABLE COLORS ONLINE

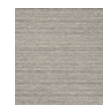
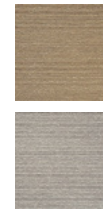
CONTRACT@MAXWELLFABRICS.COM

# HANALEI HIDEAWAY

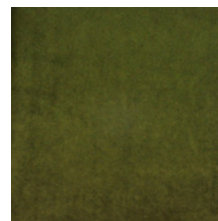
COLOR TRENDS  
sprout & macadamia



BENNINGTON  
#607 NATURAL



WYNDHURST  
#645 PESTO



PALERMO  
#418 OLIVE



MEADOWMERE  
#647 SAGE

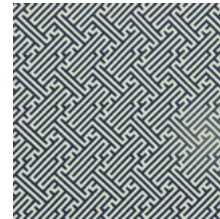




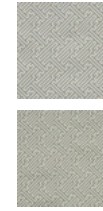
# FULL SAILS

## COLOR TRENDS

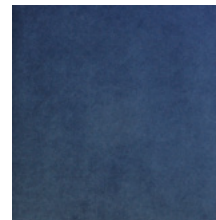
Santorini blue & stucco



ALTON  
#658 WATERWAY



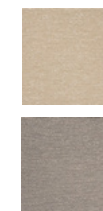
GILFORD  
#663 SNOW



PALERMO  
#413 DENIM



FLUME  
#654 NAVY



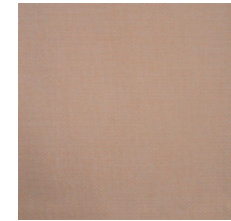


# COZUMEL CORAL

COLOR TRENDS  
Aegean & coral



BANDERA  
#601 TRICKLE



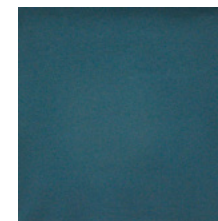
PUTNEY  
#602 TANGERINE



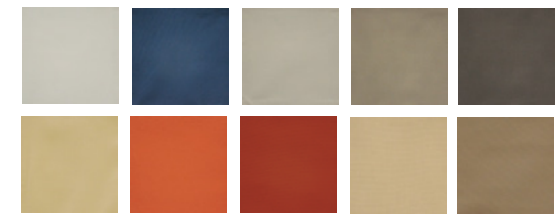
PALERMO  
#425 TERRA



PALERMO  
#426 PALE



STANDISH  
#643 PETROL



CLICK THE FABRICS IN THE SCHEME OR THE ICONS TO THE RIGHT  
TO VIEW AVAILABLE COLORS ONLINE

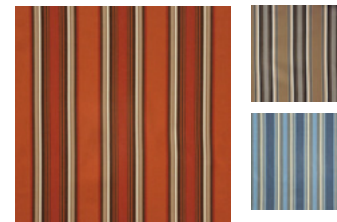
CONTRACT@MAXWELLFABRICS.COM



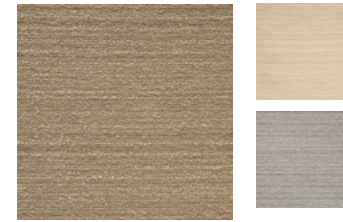
# RED ROCKS

COLOR TRENDS

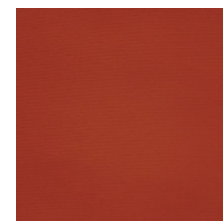
cadmium & ashwood



STOCKBRIDGE  
#604 TAMALE



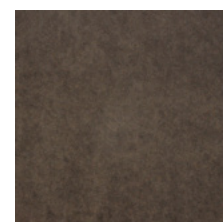
BENNINGTON  
#613 TRAIL



STANDISH  
#605 PAPRIKA



STANDISH  
#612 KHAKI



PALERMO  
#406 MOOSE



CLICK THE FABRICS IN THE SCHEME OR THE ICONS TO THE RIGHT  
TO VIEW AVAILABLE COLORS ONLINE

CONTRACT@MAXWELLFABRICS.COM



# SPRING 2023

## 1. HOME & GARDEN ACT VI

*Home & Garden is Maxwell's category for decorative performance indoor/outdoor fabrics. This latest book is a compilation of classic motifs like cabana stripes, palm leaves & a Greek key, alongside fresh & contemporary abstracted linework & kilim-inspired patterns. Standout patterns include Bandera, a distressed-effect rug design; Meadowmere, a tropically-inspired palm leaf pattern, and Marfa, a contemporary geometric with accenting novelty yarns for textural interest.*



## 2. HOME & GARDEN ACT VII

*Palermo is a plush velvet with a cotton look, suitable for use indoors and out. This velvet is available in 33 rich colorways including trend-forward copper and poblano green with a supporting cast of complex neutrals. Palermo is easily cleanable with mild soap and water or with a dilution of bleach if needed, and meets 100,000 double rubs and is 100% recycled solution-dyed polyester in the pile to provide unmatched colorfastness to light.*

# LET US BE YOUR Design Assistant™

Our dedicated in-house design assistant team are unrivaled in the industry. Consider our design assistants your style concierge. If the look you envision for your project is not in our line, our design assistants will work to source or create the perfect textile through our trusted suppliers.



### EMAIL

[contractsourcing@maxwellfabrics.com](mailto:contractsourcing@maxwellfabrics.com)

### PHONE

800-663-1159 ext 1

[CONTRACT@MAXWELLFABRICS.COM](mailto:CONTRACT@MAXWELLFABRICS.COM)

CLICK A BOOK IMAGE OR BOOK NAME TO VIEW IT ON OUR WEBSITE