



# Maxwell

CONTRACT LOOKBOOK

SUMMER 2023

HOSPITALITY HEALTHCARE CONTRACT

[maxwellfabrics.com](http://maxwellfabrics.com) | 800-663-1159 EXT 6 | [contract@maxwellfabrics.com](mailto:contract@maxwellfabrics.com)

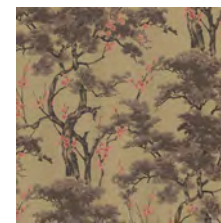


# GILDED GLADE

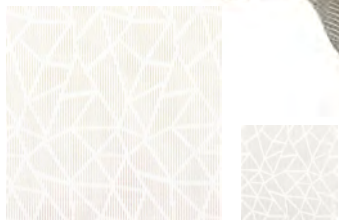
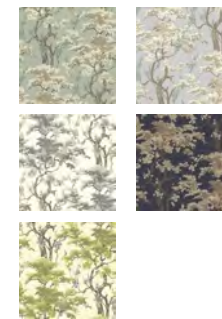
COLOR TRENDS  
goji & olive



VOLTERRA  
#415 CACTUS



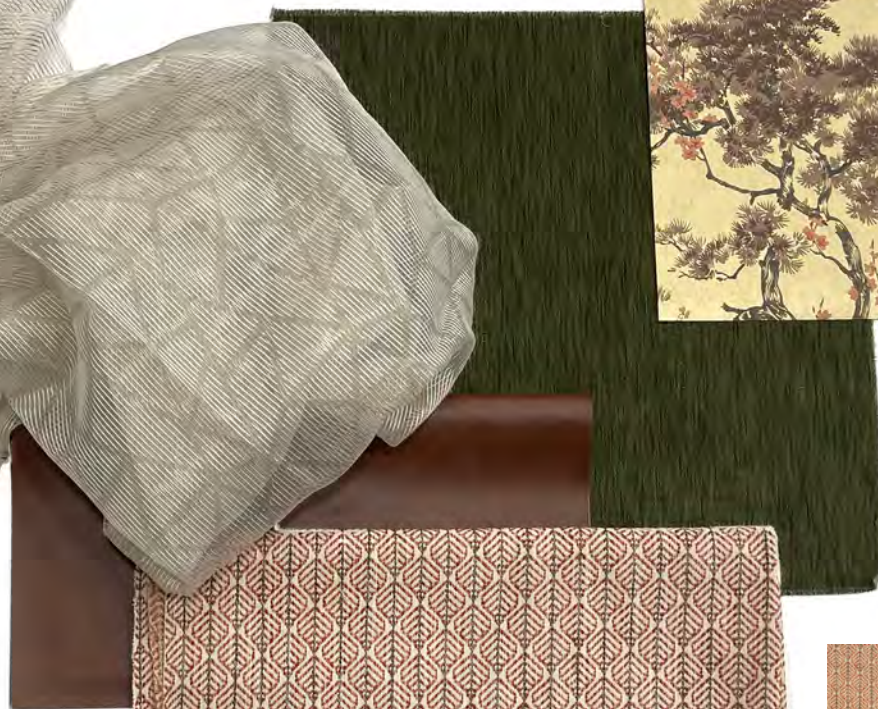
HAREWOOD  
#03



GAUL  
#537 MINK



GRANGER  
#712 BOURBON



ELM TREE  
#914 BERRY



CLICK THE FABRICS IN THE SCHEME OR THE ICONS TO THE RIGHT  
TO VIEW AVAILABLE COLORS ONLINE

CONTRACT@MAXWELLFABRICS.COM



# ON THE BOARDWALK

COLOR TRENDS

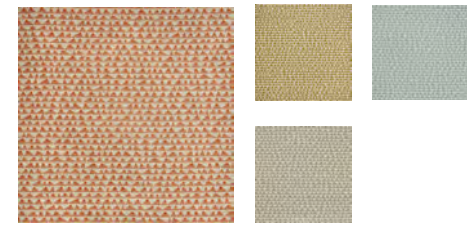
himalayan salt pink & agave



POMEROY  
#917 TAFFY



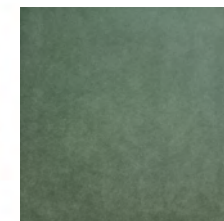
BENDITO  
#224 MIST



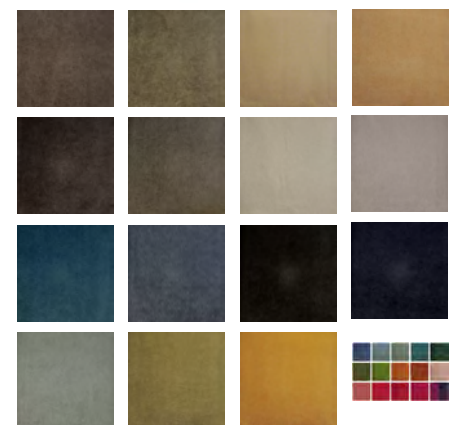
MOUNTAINEER  
#921 GUAVA



RAFTERS  
#813 PURE



PALERMO  
#415 DUCKEGG



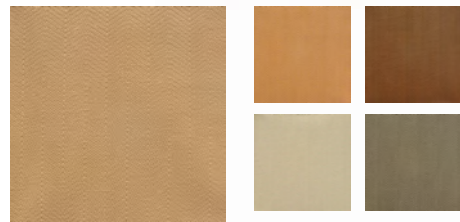
CLICK THE FABRICS IN THE SCHEME OR THE ICONS TO THE RIGHT  
TO VIEW AVAILABLE COLORS ONLINE

CONTRACT@MAXWELLFABRICS.COM

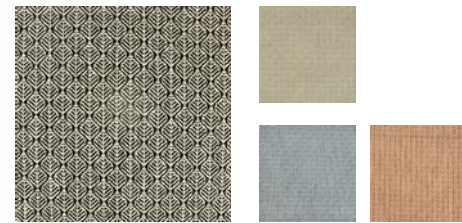


# SANDHILL

COLOR TRENDS  
camel & jet



FAWKES  
#705 MACADAMIA



ELMTREE  
#817 EBONY

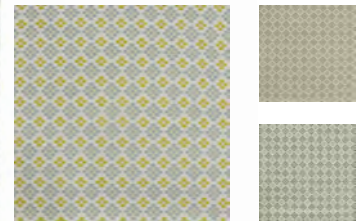
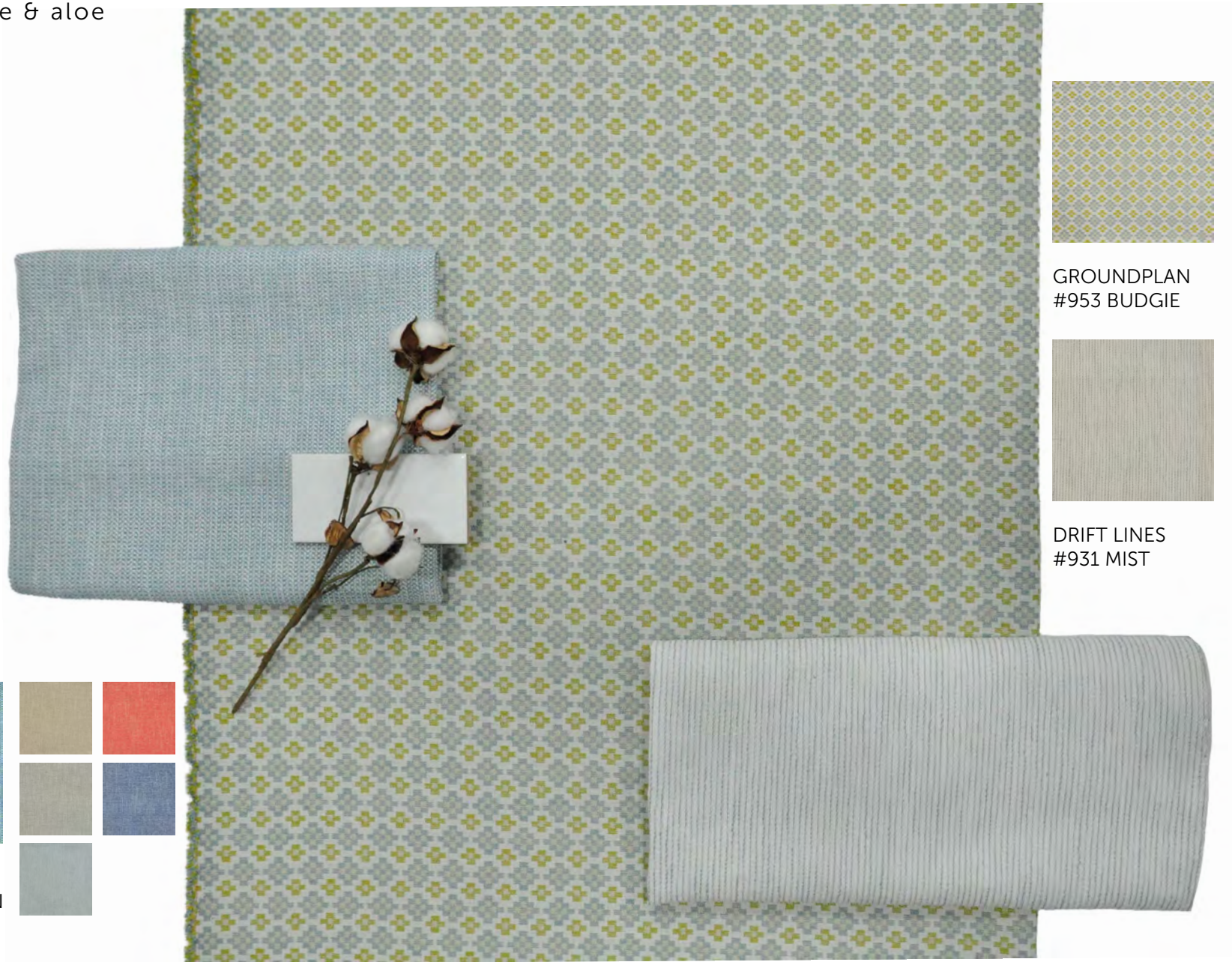


NIELSEN  
#838 COBBLESTONE



# MINT JULEP

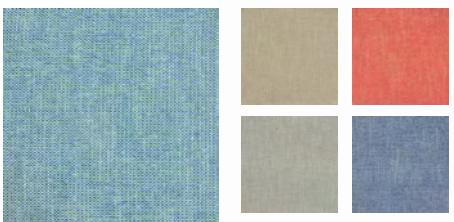
COLOR TRENDS  
heron blue & aloe



GROUNDPLAN  
#953 BUDGIE



DRIFT LINES  
#931 MIST



ROWLOCK  
#955 CARIBBEAN

CLICK THE FABRICS IN THE SCHEME OR THE ICONS TO THE RIGHT  
TO VIEW AVAILABLE COLORS ONLINE

CONTRACT@MAXWELLFABRICS.COM

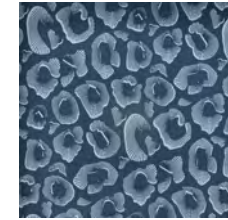


# DEEP SEA CORAL

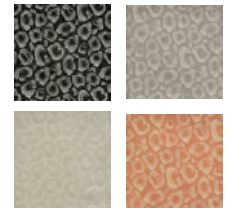
COLOR TRENDS  
coral & navy



SEVERN  
#901 CORAL REEF



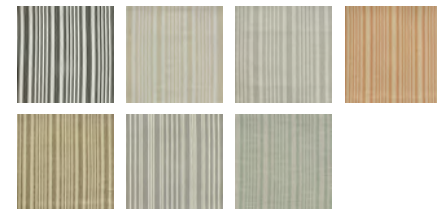
COQUINA  
#940 LAKE



LUXOR  
#11 DEEP SEA



HILROY  
#936 WATERFALL



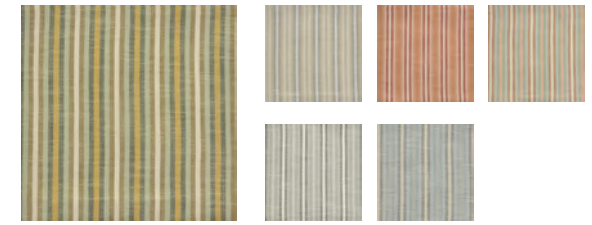
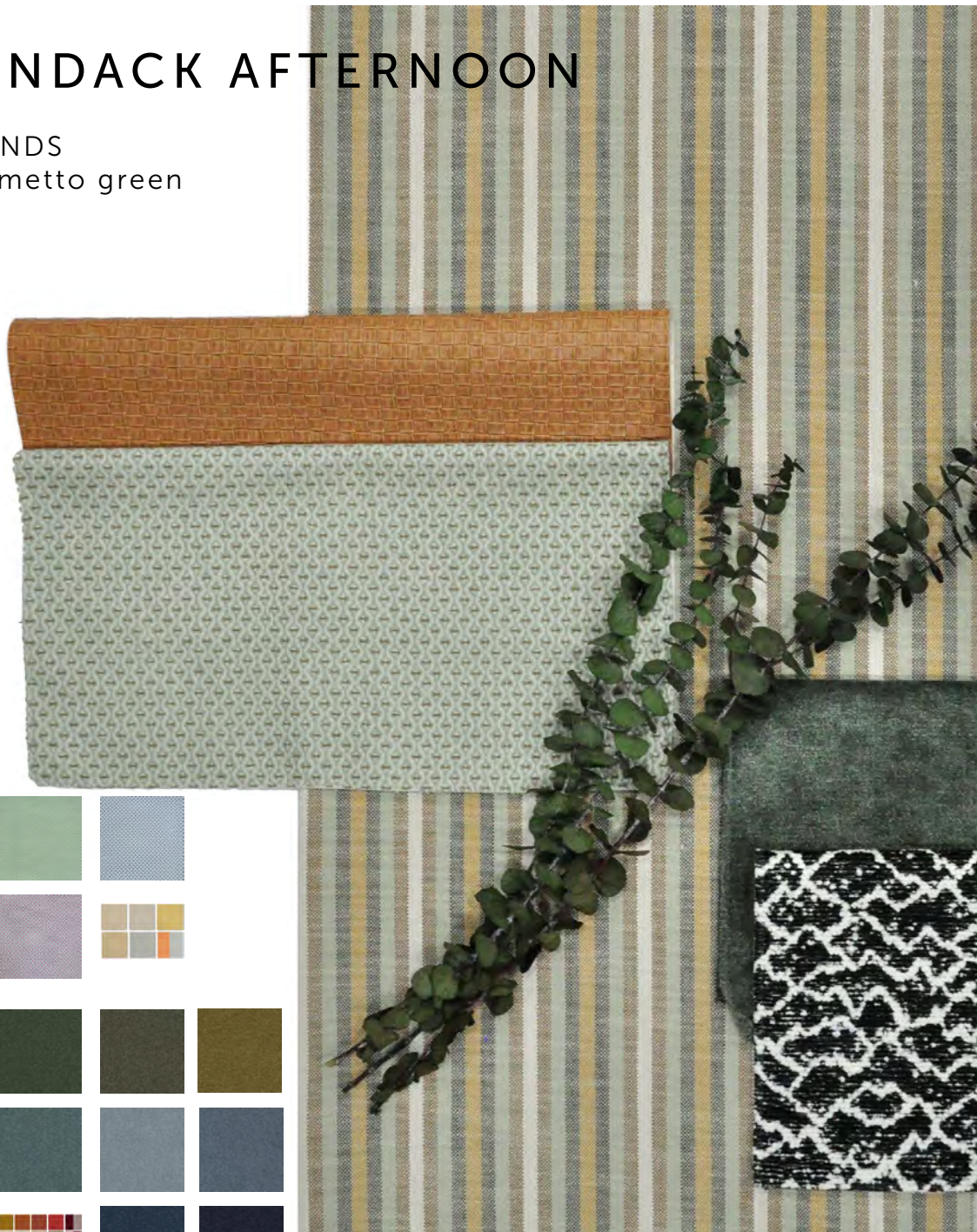
CLICK THE FABRICS IN THE SCHEME OR THE ICONS TO THE RIGHT  
TO VIEW AVAILABLE COLORS ONLINE

CONTRACT@MAXWELLFABRICS.COM

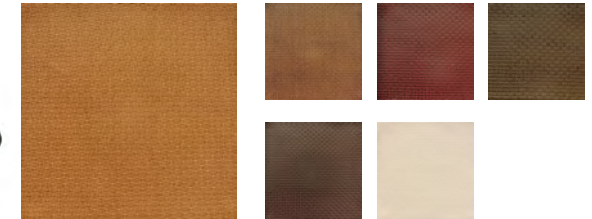


# ADIRONDACK AFTERNOON

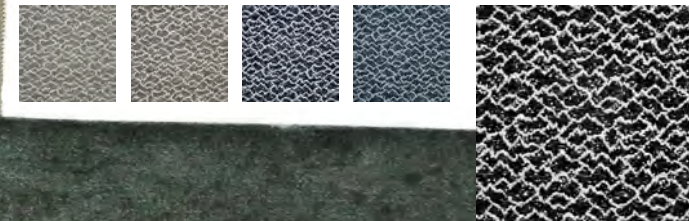
COLOR TRENDS  
ochre & palmetto green



COLONNADE  
#908 CAMPGROUND



BASKETRY  
#708 PEANUT



CLOUDCROFT  
#825 EBONY



NANETTE  
#951 ALOE



CALABRIA  
#402 BALSAM



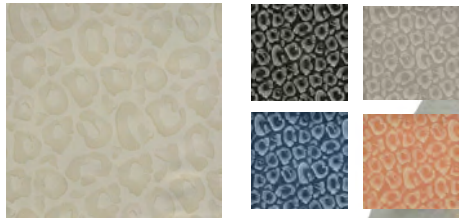
CLICK THE FABRICS IN THE SCHEME OR THE ICONS TO THE RIGHT  
TO VIEW AVAILABLE COLORS ONLINE

CONTRACT@MAXWELLFABRICS.COM



# PENSACOLA PIER

COLOR TRENDS  
white sand & caribe



COQUINA  
#828 CLOUD



BOULEVARDIER  
#403 CREAMERY



POMEROY  
#903 OASIS



ROWLOCK  
#955 CARIBBEAN



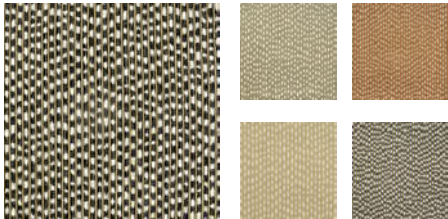




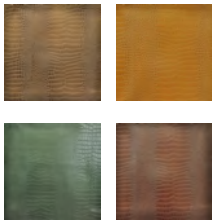


# LAMPLIGHTER

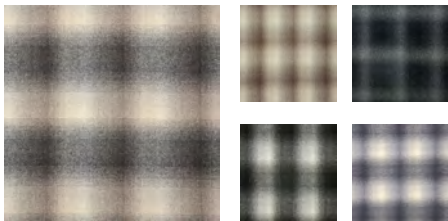
COLOR TRENDS  
onyx & peppercorn



LANGTRY  
#819 TERRIER



LYLE  
#750 LACQUER



BELSTAFF  
#701 OTTER



CALABRIA  
#448 PINECONE

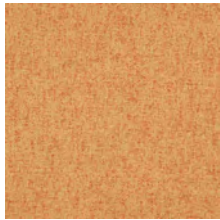


JONI  
#936 ICARUS

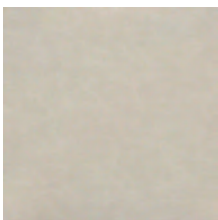
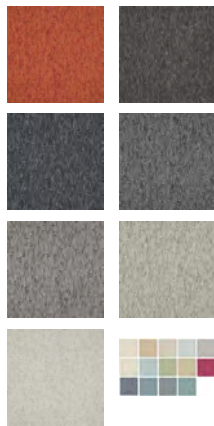


# RUM RUNNER

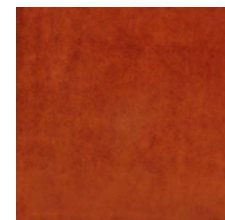
COLOR TRENDS  
marigold & alabaster



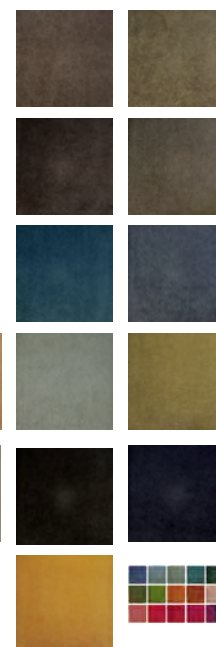
SPACE RACE  
#519 PUMPKIM



GRANGER  
#735 MINERAL



PALERMO  
#425 TERRA



WINDING ROAD  
#910 CANYON



CLICK THE FABRICS IN THE SCHEME OR THE ICONS TO THE RIGHT  
TO VIEW AVAILABLE COLORS ONLINE

CONTRACT@MAXWELLFABRICS.COM



# BOOKS

SUMMER COLLECTION 2025

CLICK A BOOK IMAGE OR A BOOK NAME TO VIEW IT ON OUR WEBSITE



## PERFORMANCE WOVENS VOL.VI PEACHTREE

*Peachtree combines hues of Georgia peach, limoncello and jammy shades of raspberry coulis and gojiberry with fresh palmetto green, vibrant aqua and heron blue.*



## PERFORMANCE WOVENS VOL.VI PAMPAS

*Pampas is a softly moody neutral compilation, bringing together pale golden pampas, tones of tobacco brown and stormy grey alongside high-contrast black and white.*

*Performance Wovens is the ultimate series for high-performance decorative upholstery. Exclusive, fashion-forward feature designs coordinate with and complement a range of small-scale patterns, textures and solids. Our Volume Six introduction is a true all-in-one, with 23 inherently easy-clean, InsideOut fabrics woven in the US, styled by color over two books. All patterns exceed 60,000 double rubs Wyzenbeek as well as meeting all other ACT standards.*

*Additionally, these InsideOut constructions are fade-resistant, making them perfect for high-sun exposure indoor settings or indoor-outdoor living.*



# BOOKS

SUMMER COLLECTION 2025

CLICK A BOOK IMAGE OR A BOOK NAME TO VIEW IT ON OUR WEBSITE



3

## PERFORMANCE VELVETS VOL. IV

*Our best-selling cleanable velvet series continues with the introduction of Performance Velvets 4. Stocked with FibreGuard easy clean technology, spills and soiling are easily removed using a clean cloth, water and mild soap if needed. A saturated colorline features moody balsam greens, deep gold, sapphire and ruby. Both patterns exceed 100,000 double rubs Wyzenbeek as well as meeting all other ACT standards. Volterra is a sumptuous stria that mimics the look of a cotton velvet, with all the high performance you expect from FibreGuard. Calabria is a plush, chenille velvet with a dry finish. Single tone in some colorways and showing sophisticated variation in others, this is a must-have.* [maxwellfabrics.com/collections/summer-2023](https://maxwellfabrics.com/collections/summer-2023)



4

## EASY RIDER VIII

*The latest Easy Rider faux leather grouping is as classic as it gets, with distressed top-grain leather looks alongside crocodile, alligator, ostrich and snake looks. Basketweave effects add even more depth to the rich, patinaed palette of caramel, cognac and coffee which is accented with glints of metallic and gemstone hues. The constructions in Easy Rider VIII are either PVC or polyurethane, and all are highly durable and cleanable.*







# CONTACT US

## TALK TO THE EXPERTS

Let us assist you by:

- Saving you time
- Offering technical knowledge and suggesting substitutes
- Providing solutions for budgets and lead times
- Stock checking and availability
- Priority sample shipping upon request

---

### EMAIL

[contractsourcing@maxwellfabrics.com](mailto:contractsourcing@maxwellfabrics.com)

### PHONE

800-663-1159 ext. 1

### WEBSITE

[maxwellfabrics.com](http://maxwellfabrics.com)

*Maxwell*

## LET US BE YOUR Design Assistant <sup>TM</sup>

Our dedicated in-house design assistant team are unrivaled in the industry. Consider our design assistants your style concierge. If the look you envision for your project is not in our line, our design assistants will work to source or create the perfect textile through our trusted suppliers.



### EMAIL

[contractsourcing@maxwellfabrics.com](mailto:contractsourcing@maxwellfabrics.com)

### PHONE

800-663-1159 ext 1